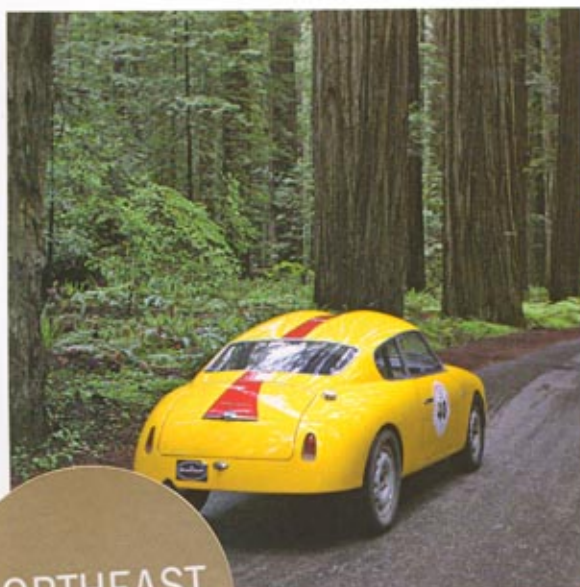
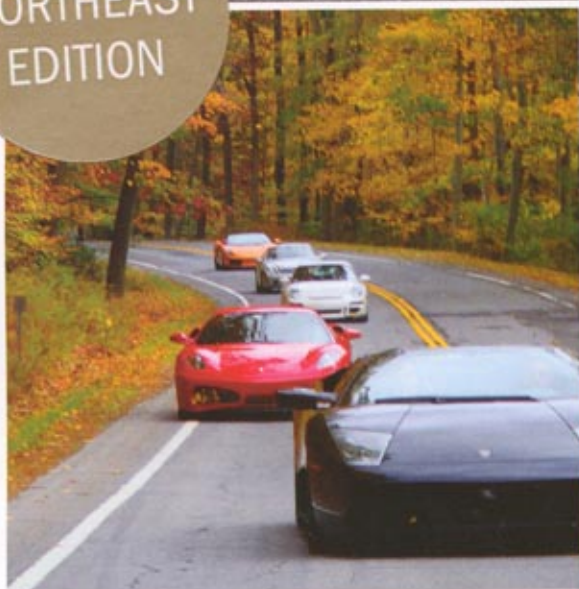


The Robb Report COLLECTION™

SPORTS, LUXURY AND CLASSIC CARS



NORTHEAST
EDITION



ADVENTURE GUIDE

RIDE ALONG: California Mille ♦ Baja 1000 ♦ Automotive Country Clubs
Porsche Travel Club ♦ Driving Land Rovers in Belize and Morocco & More

FEBRUARY 2008

robbreportcollection.com

A CURTIS MEDIA PUBLICATION

SUPPLEMENT TO ROBB REPORT
NOT INTENDED FOR INDIVIDUAL SALE

Adventure Gear

A few practical items may help you endure your next escapade.

BY PAUL MEYERS

No Roaming Charges

The Motorola Talkabout T9500XLR two-way radio (www.motorola.com) provides a range of up to 25 miles by using two different frequencies. A patented technology allows the Talkabout to filter out static between spoken words and deliver a noticeably clearer transmission. Two radios with belt clips, a dual charger, two NiMH rechargeable battery packs and an extra pair of faceplates are included in the \$80 price.

Speed Goggles

7EYE by Panoptix (www.panoptix.com), a provider of protective eyewear since 1997, offers the \$175 Taku frames with a day/night photochromic lens which reacts quickly to changing light conditions. Designed specifically to shield motorcyclists during all-conditions riding, a thick air dam along the inside wall of the frame delivers optimal protection from wind, airborne irritants, and peripheral glare. The Taku frames are available in Horn (shown), Glossy Black, and Charcoal.

Fancy Treads

Compared to the tires after which they are named, Michelin's Primacy MXV4 shoes (www.michelinfootwear.com) use a homogeneous tread and rubber compound. The Cobra (\$80) features a single ply mesh fabric for maximum ventilation, while a patented, multi-chambered heel cushion serves as a shock absorber between the insole and midsole. Hand-sewn stitching provides a tight grip toward the back of the foot for superior balance and the rolled-rubber heel enhances the shoe's mobility while driving. Because so much is riding on your attire.

